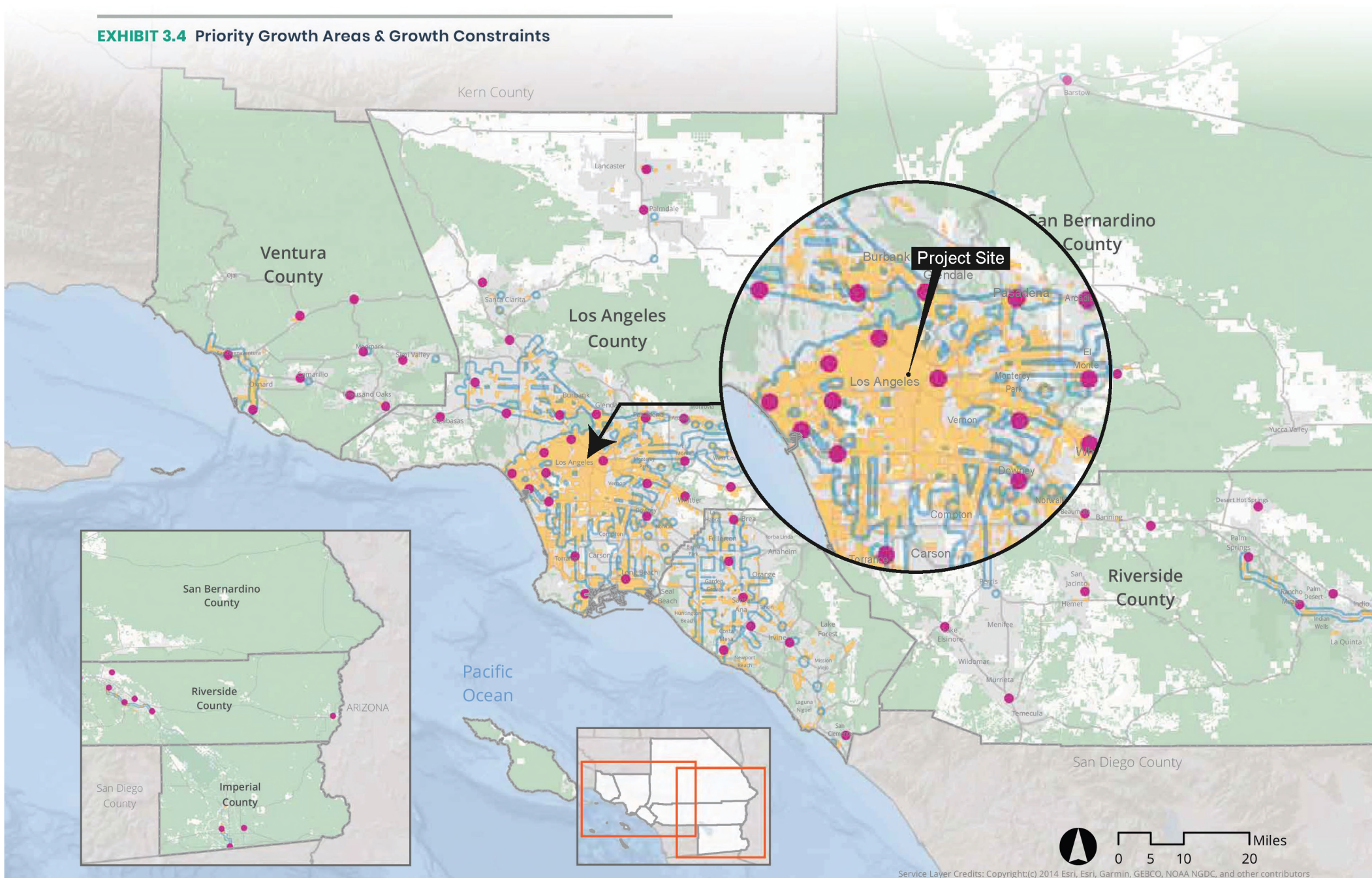


Appendix B

Exhibits 3.4 – 3.10 from the 2020-2045 RTP/SCS

EXHIBIT 3.4 Priority Growth Areas & Growth Constraints



Service Layer Credits: Copyright(c) 2014 Esri, Esri, Garmin, GEBCO, NOAA NGDC, and other contributors

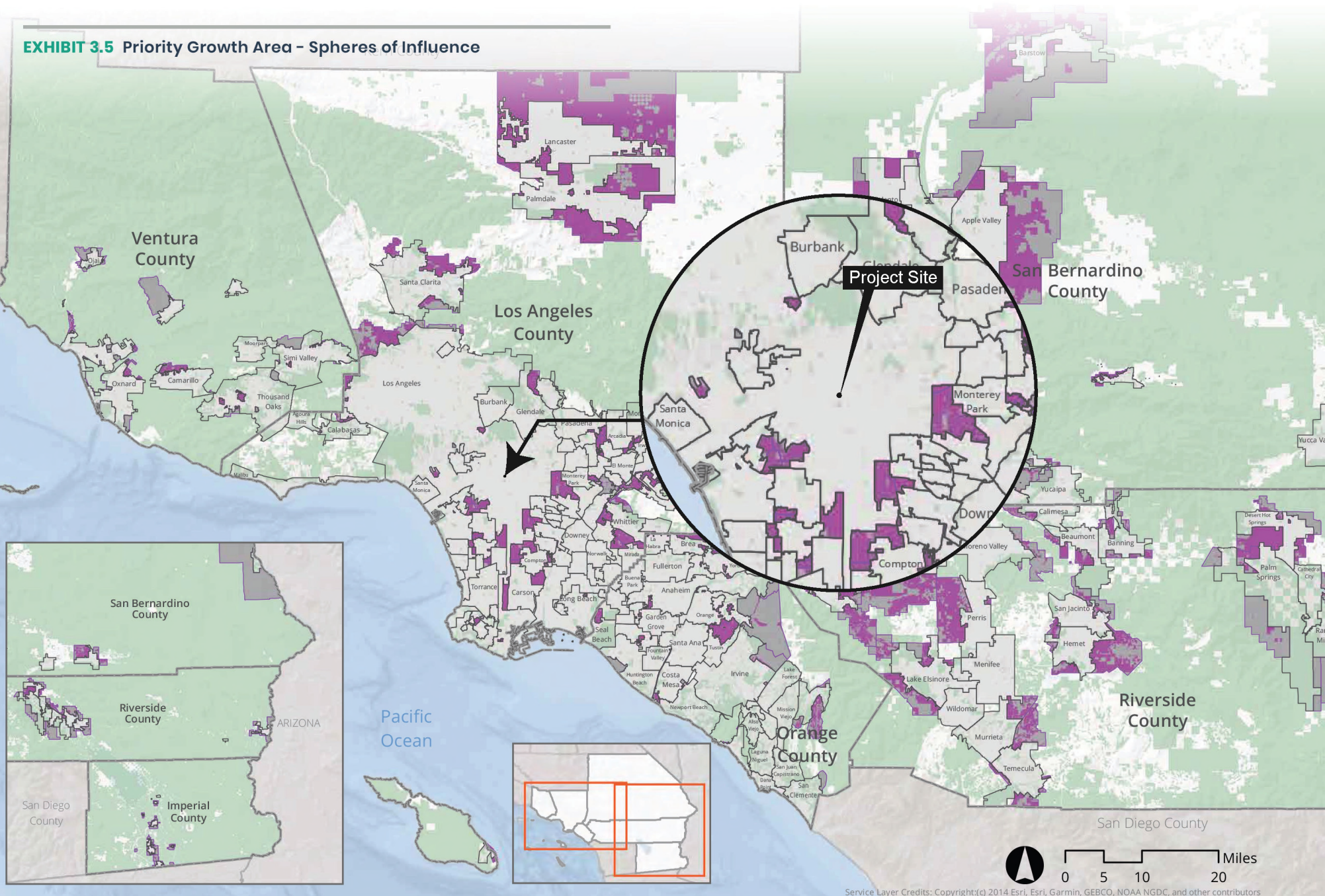
Priority Growth Areas vs. Regional Growth Constraints

- Job Center
- Neighborhood Mobility Areas
- High Quality Transit Area
- Regional Growth Constraints

Source: CalBRACE, California Department of Conservation, CPAD, CCED, County Transportation Commissions, NOAA Coastal Services Center, SCAG, 2019

Note: SCAG used locally informed data elements to determine Regional Growth Constraints such as Tribal lands, Conserved Land and others. See the Sustainable Communities Strategy Technical Report for more details.

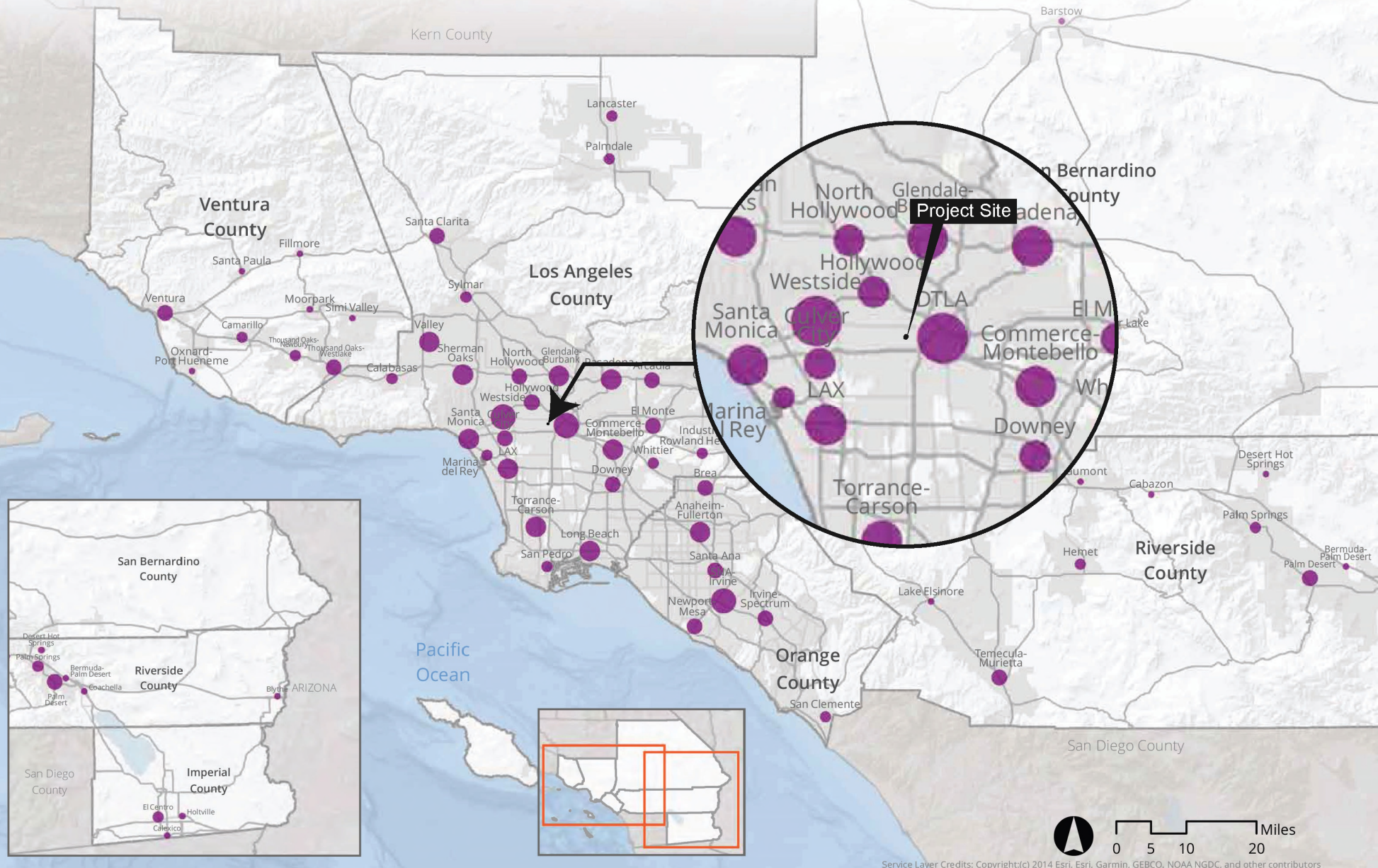
EXHIBIT 3.5 Priority Growth Area – Spheres of Influence



- County Boundaries
- Sphere of Influence
- City Boundaries
- Regional Growth Constraints

Note: SCAG used locally informed data elements to determine Regional Growth Constraints such as Tribal lands, Conserved Land and others. See the Sustainable Communities Strategy Technical Report for more details.

EXHIBIT 3.6 Priority Growth Area – Job Centers



SCAG Region Proposed 2020 RTP/SCS Job Centers (Total Employment)

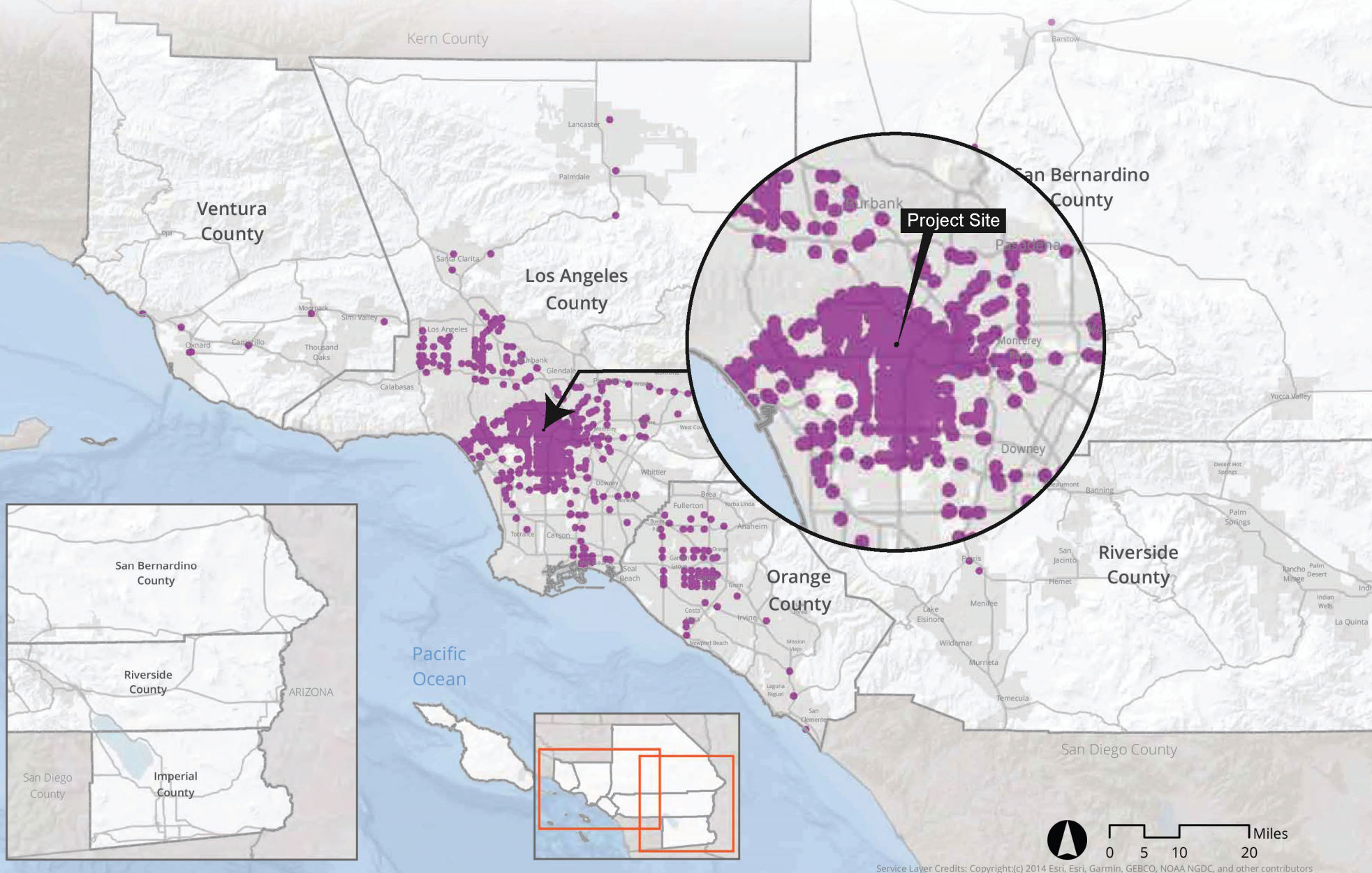
- Less than 10,001 (17)
- 10,001 - 25,000 (22)
- 25,001 - 50,000 (19)
- 50,001 - 150,000 (11)
- More than 150,000 (3)

Source: SCAG, 2019

Notes:

- (1) Centers are areas with denser employment than their surroundings.
- (2) Dots represent the total employment in each center, not center boundaries.
- (3) Names are intended to be illustrative and may not reflect all the jurisdictions in which a center fully lies.

EXHIBIT 3.7 Priority Growth Area - Transit Priority Areas

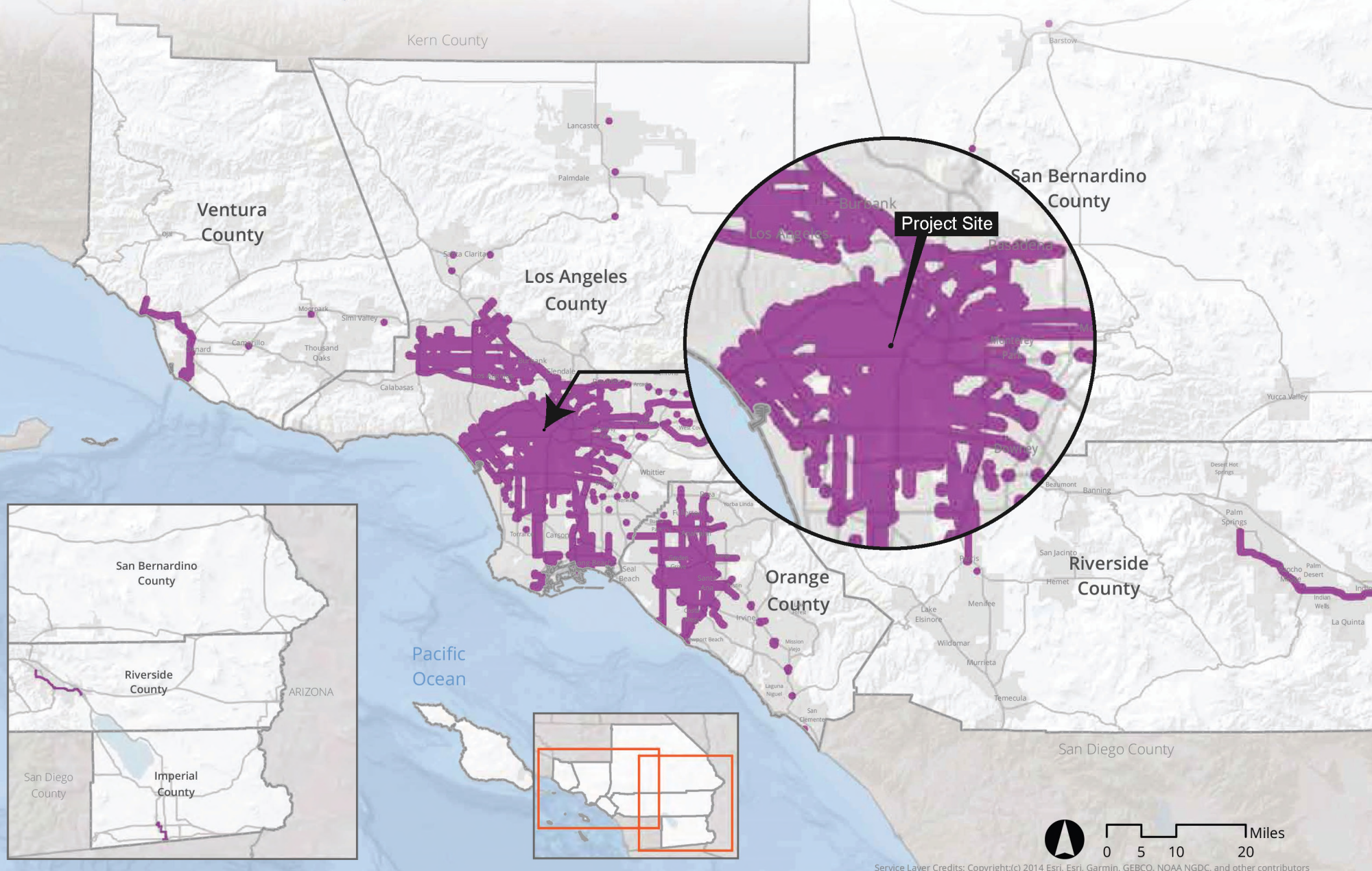


Transit Priority Areas (2045)

■ TPA

Note: Transit priority area (TPA) refers to an area within one-half mile of a major transit stop that is existing or planned. SCAG identifies major transit stops and transit priority areas using the methodology described in the Transit Technical Report. Major transit stops are extracted from 2045 plan year data of Connect SoCal.

EXHIBIT 3.8 Priority Growth Area - High Quality Transit Areas

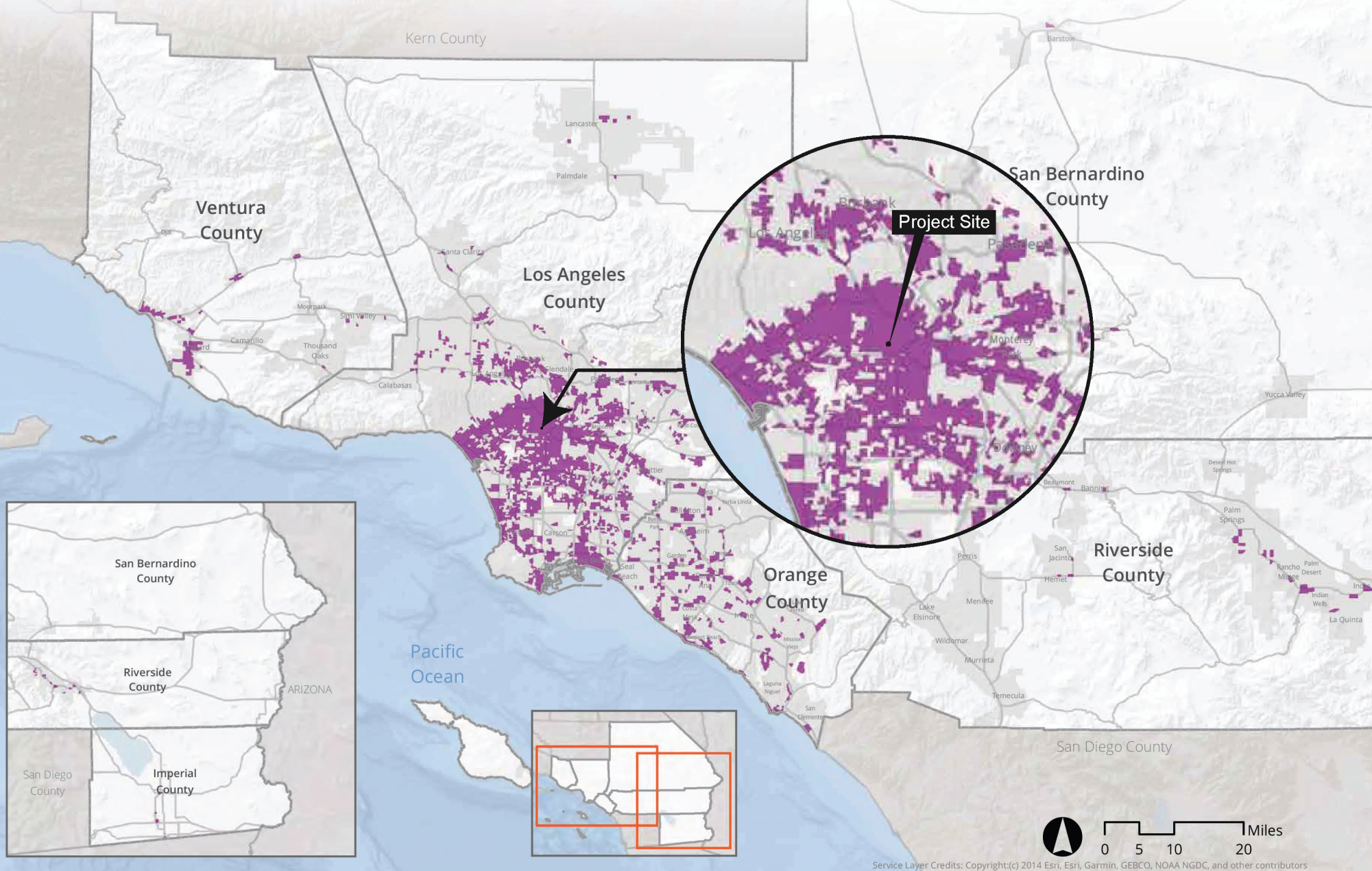


High Quality Transit Areas (2045)

■ HQTA

Note: SCAG's High Quality Transit Area (HQTAs) is within one-half mile from major transit stops and high quality transit corridors (HQTAs). SCAG identifies major transit stops and HQTAs using the methodology described in the Transit Technical Report. Major transit stops and HQTAs are extracted from 2045 plan year data of Connect SoCal.

EXHIBIT 3.9 Priority Growth Area - Neighborhood Mobility Areas

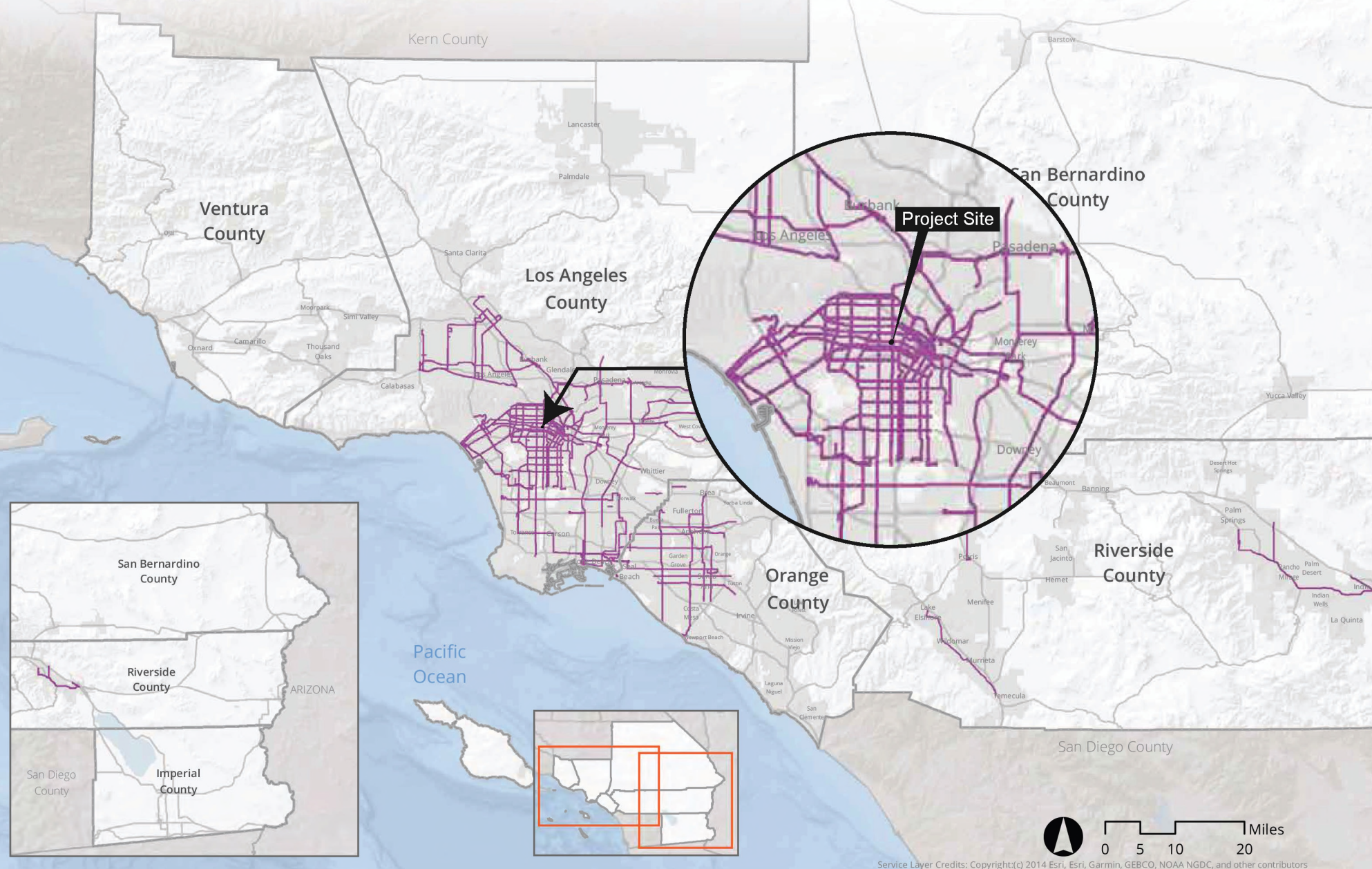


Neighborhood Mobility Areas (NMA)

■ NMA

Note: Neighborhood Mobility Areas (NMA) were identified by analyzing and assigning z-scores four measures at the Tier 2 TAZ level, and subsequently summing the z-scores. TAZs that scored at the 80th percentile or higher for the composite score were considered NMAs.

EXHIBIT 3.10 Priority Growth Area - Livable Corridors



Livable Corridors

— Livable Corridors

Source: SCAG, 2019